

# TEXAS CHAINSAW MASSACRE LEATHERFACE™

## INSTALLATION AND OPERATING INSTRUCTIONS

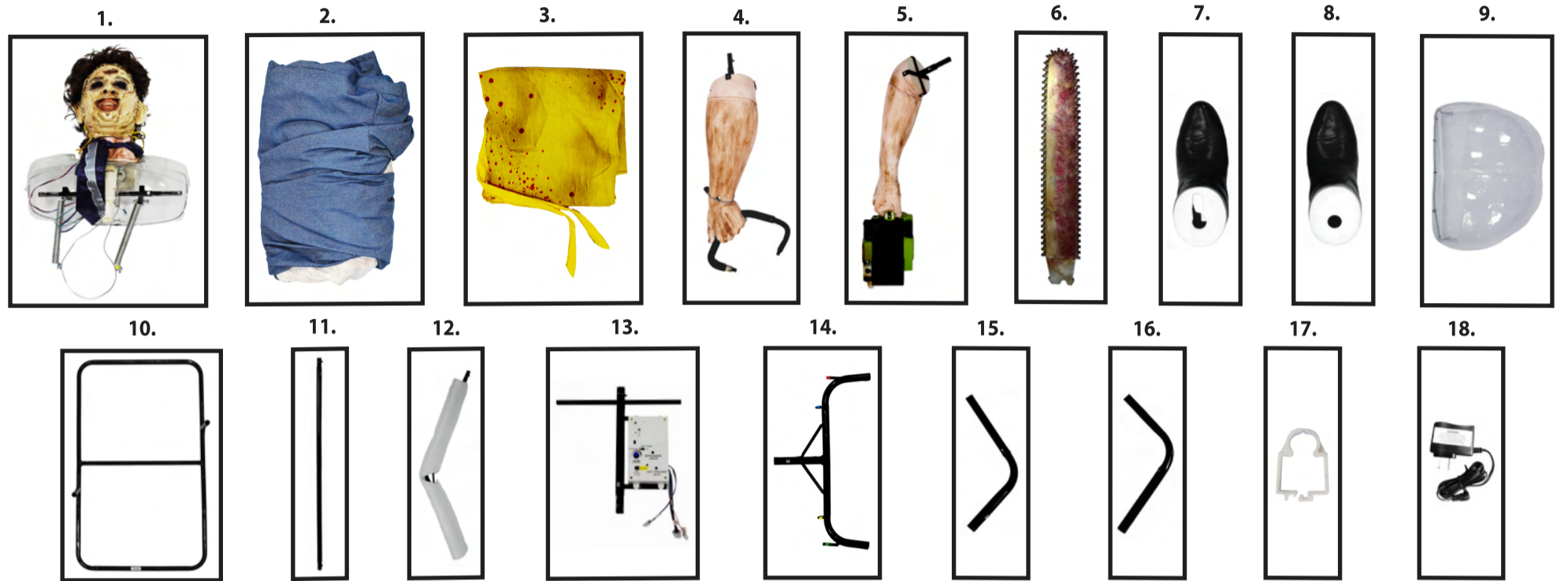
KEEP ALL PLASTIC AND WIRE PARTS AWAY FROM CHILDREN

WARNING: DO NOT TURN ON THE PROP UNTIL FULLY ASSEMBLED. STAY CLEAR OF THE PROP WHILE OPERATING.

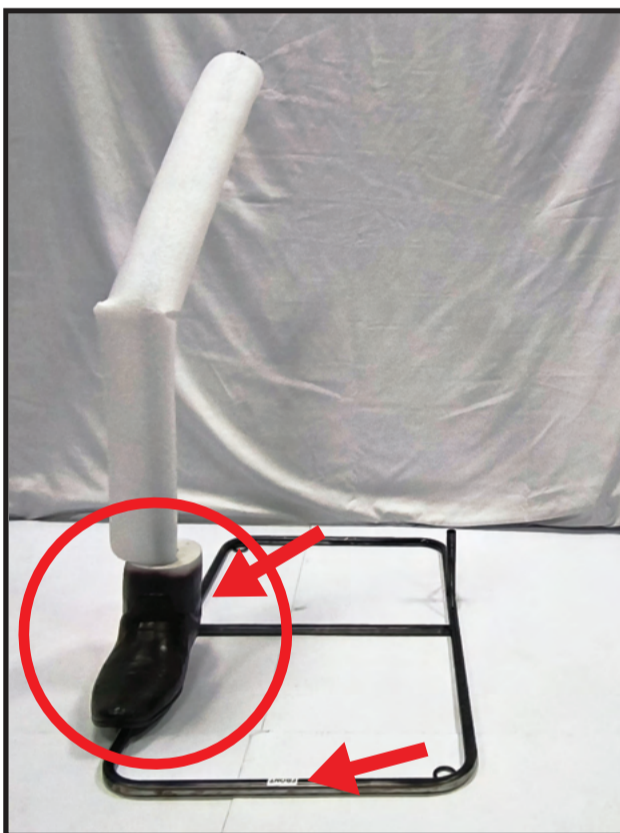
ESTIMATED ASSEMBLY TIME SEVEN MINUTES.

- PARTS:**
1. HEAD & SHOULDER FRAME
  2. CLOTHES
  3. APRON
  4. LEFT HAND
  5. RIGHT HAND & CHAINSAW
  6. CHAINSAW BLADE
  7. RIGHT SHOE
  8. LEFT SHOE
  9. REAR BLISTER
  10. BASE
  11. LEFT LEG POLE
  12. RIGHT LEG POLE & FOAM
  13. TORSO FRAME & CONTROL BOX
  14. HIP FRAME
  15. LEFT ARM FRAME
  16. RIGHT ARM FRAME
  17. WIRE MANAGEMENT CLIP
  18. ADAPTER

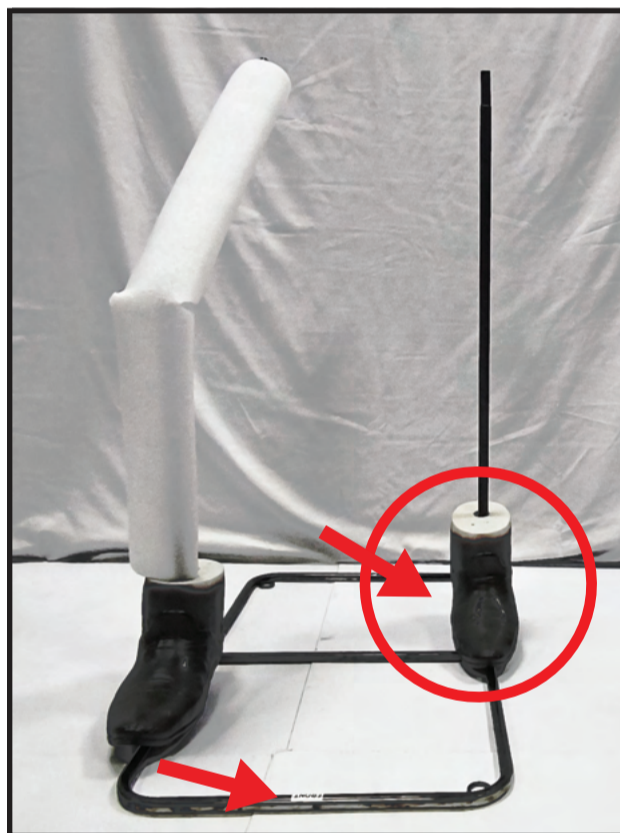
## PARTS



## ASSEMBLY



1. Facing the front of the BASE, insert the bottom of the RIGHT SHOE onto the right pole of the BASE. Snap lock the RIGHT LEG POLE & FOAM onto the BASE.  
MATCH A to A



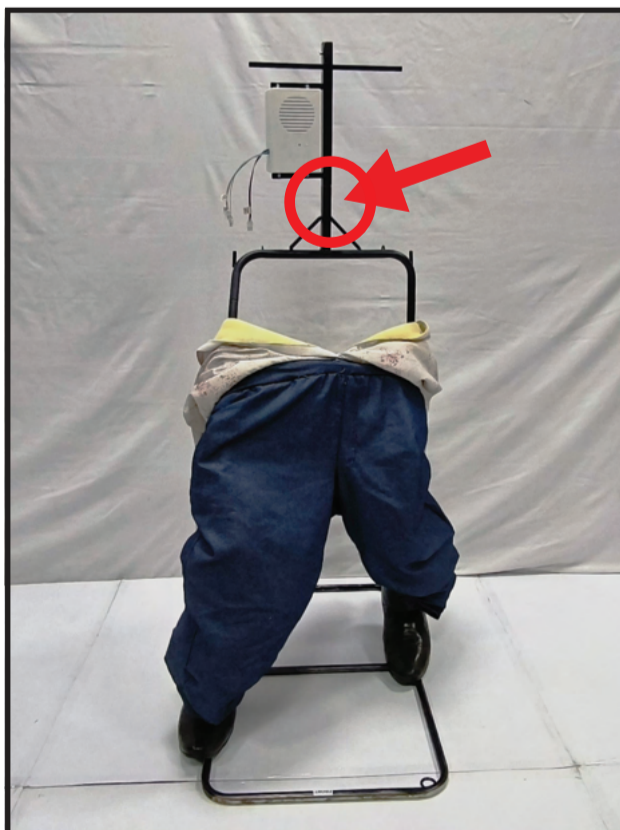
2. Facing the front of the BASE, insert the bottom of the LEFT SHOE onto the left pole of the BASE. Snap lock the LEFT LEG POLE onto the BASE.  
MATCH B to B



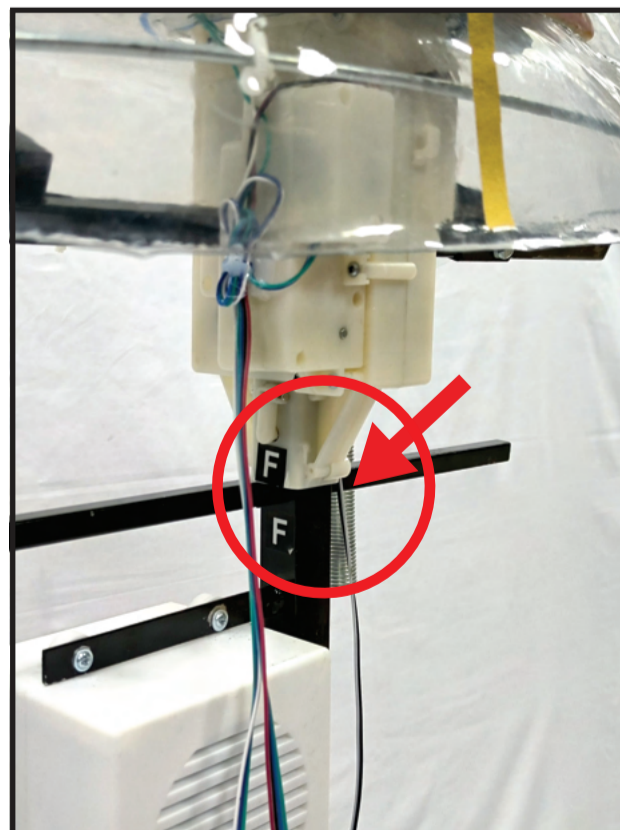
3. Slide the pant legs of the CLOTHES over the assembled leg poles.



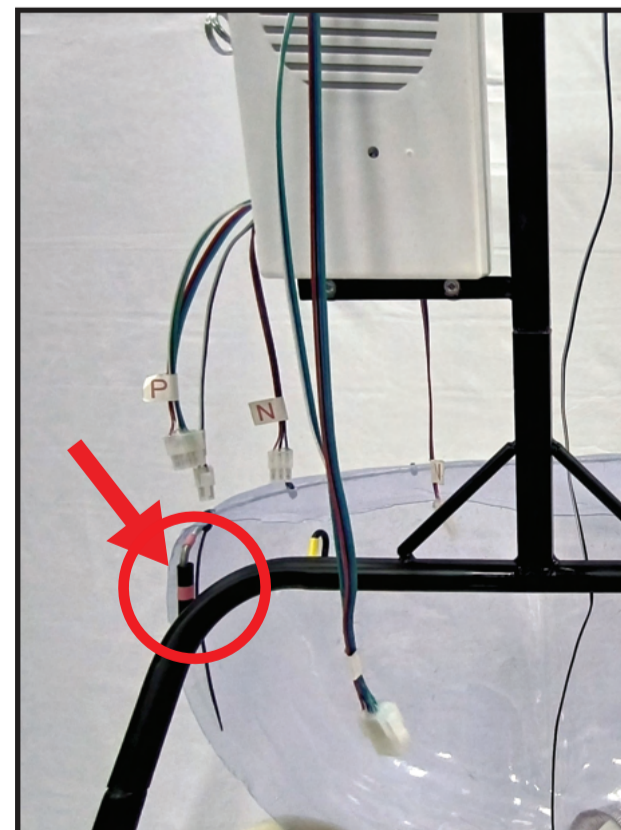
4. To ease assembly, partially insert both C and D at the same time. Then apply pressure to seat the hip frame on to the leg poles. Snap lock the HIP FRAME to the RIGHT LEG POLE & FOAM and LEFT LEG POLE.  
MATCH C to C and MATCH D to D



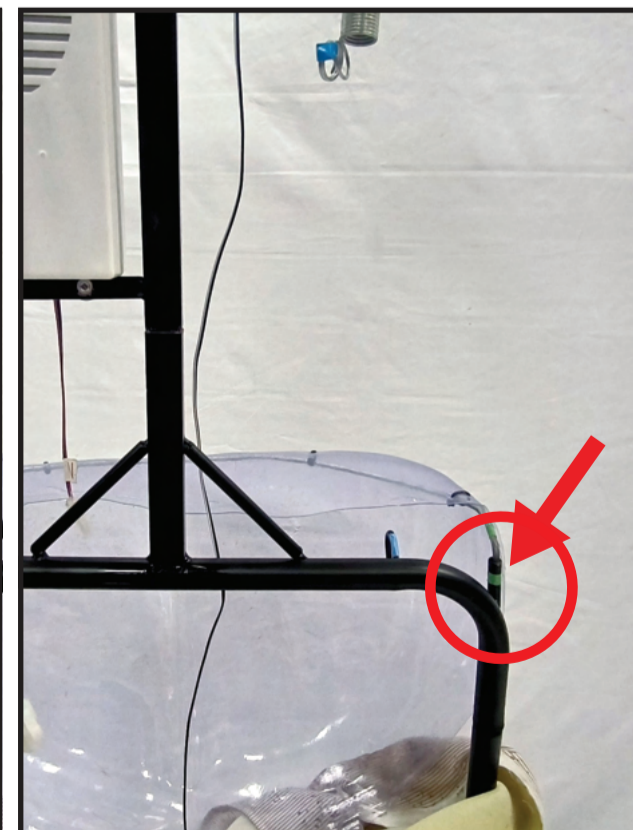
5. Snap Lock the TORSO FRAME & CONTROL BOX to the HIP FRAME.  
MATCH E to E



6. Connect the HEAD & SHOULDER FRAME to the TORSO FRAME & CONTROL BOX.  
MATCH F to F

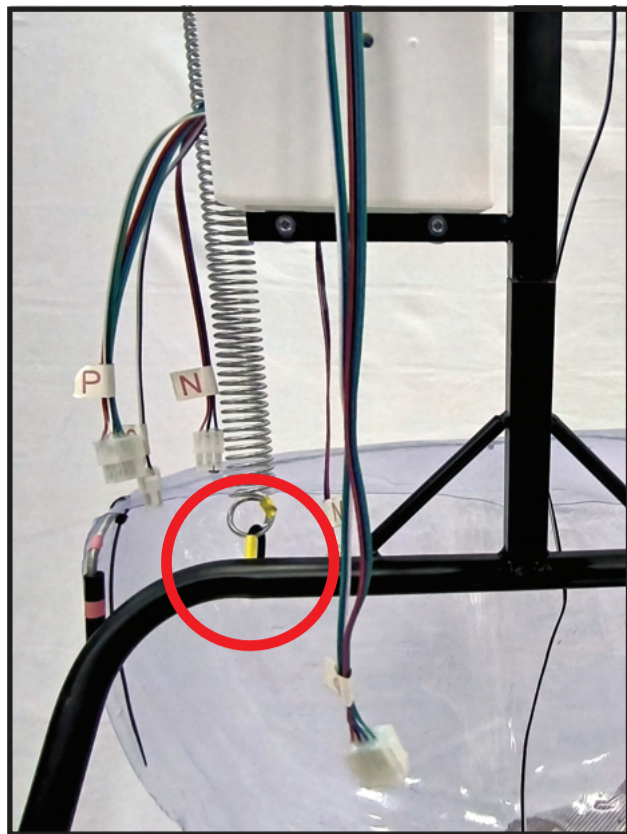


7. Insert the REAR BLISTER to the back of the HIP FRAME.  
MATCH RED to RED



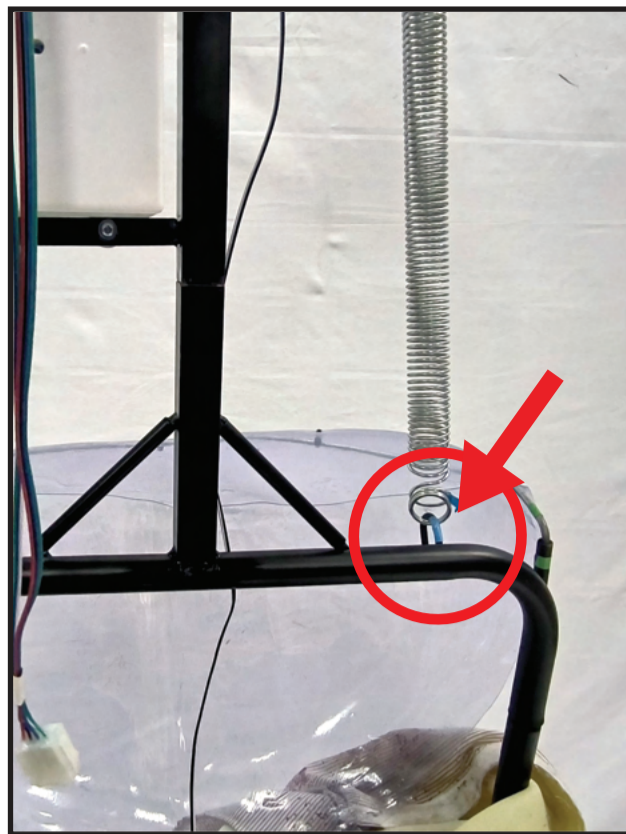
8. Insert the REAR BLISTER to the back of the HIP FRAME.  
MATCH GREEN to GREEN





9. Connect the springs located on the HEAD&SHOULDER FRAME to the HIP FRAME.

MATCH YELLOW to YELLOW



10. Connect the springs located on the HEAD & SHOULDER FRAME to the HIP FRAME.

MATCH BLUE to BLUE

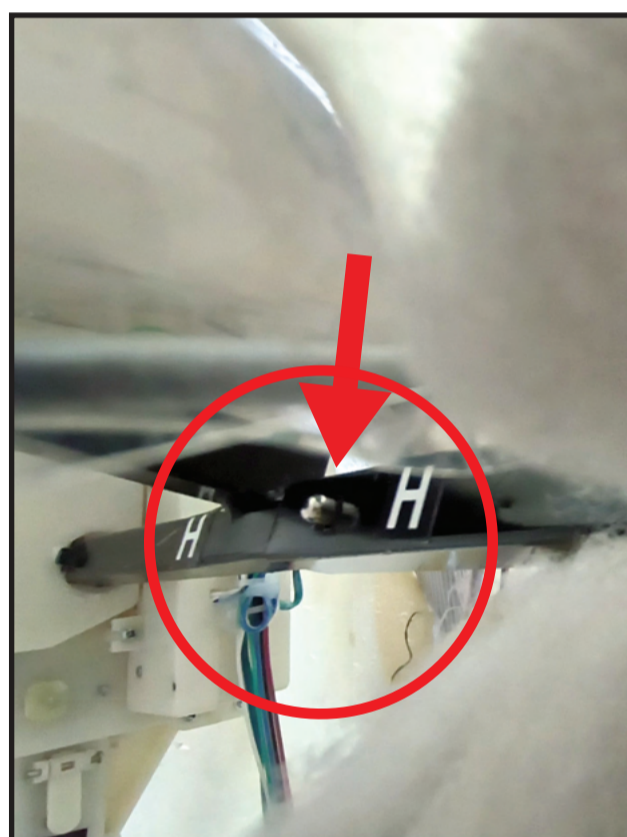


11. Adjust the CLOTHES over the REAR BLISTER and the HEAD AND SHOULDER FRAME. Check the REAR BLISTER ensuring it is secured.



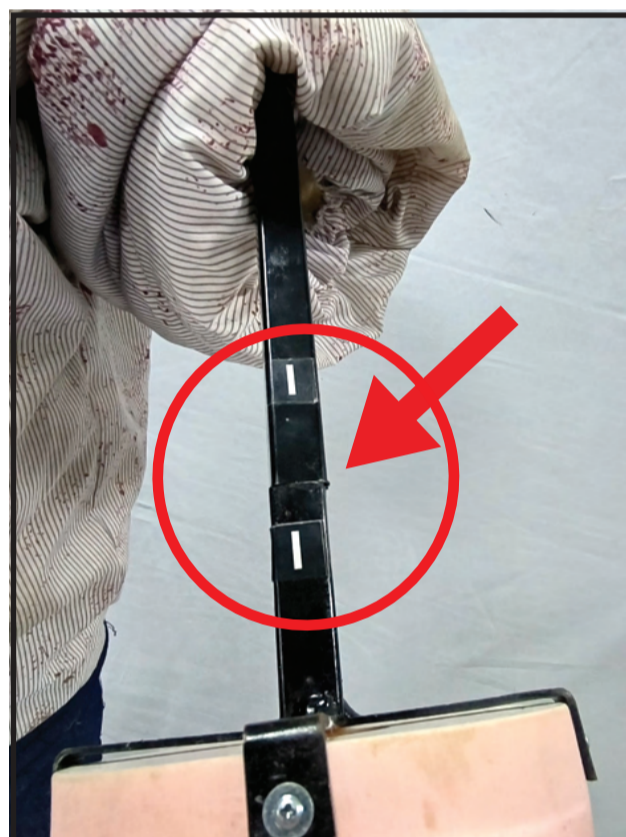
12. Roll up the left sleeve on the CLOTHES. Snap lock the LEFT ARM FRAME to the HEAD & SHOULDER FRAME.

MATCH G to G



13. Roll up the right sleeve on the CLOTHES. Snap lock the RIGHT ARM FRAME to the HEAD & SHOULDER FRAME.

MATCH H to H



14. Connect the LEFT HAND to the LEFT ARM FRAME.

MATCH I to I



15. Connect the RIGHT HAND to the RIGHT ARM FRAME.

MATCH J to J



16. Connect the CHAINSAW to the LEFT HAND.

MATCH K to K



17. Connect the CHAINSAW to the LEFT HAND.

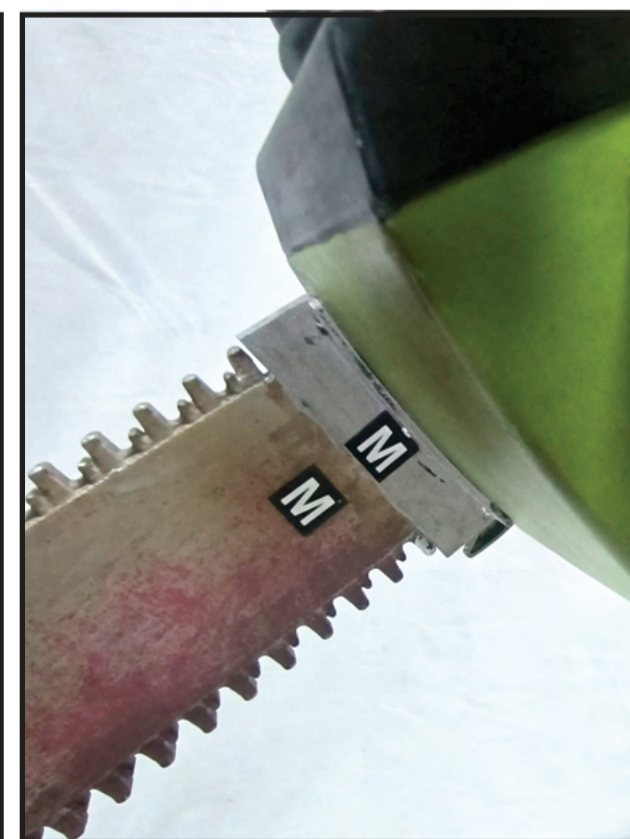
MATCH L to L



18. Adjust the elastic, located in the right and left sleeve, down over the crevice that is located on both the LEFT HAND and RIGHT HAND's arms.



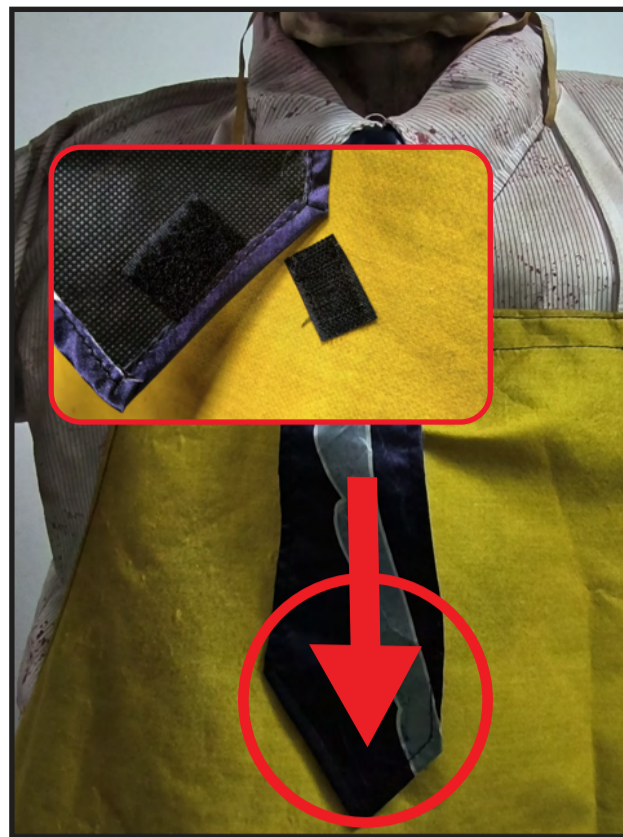
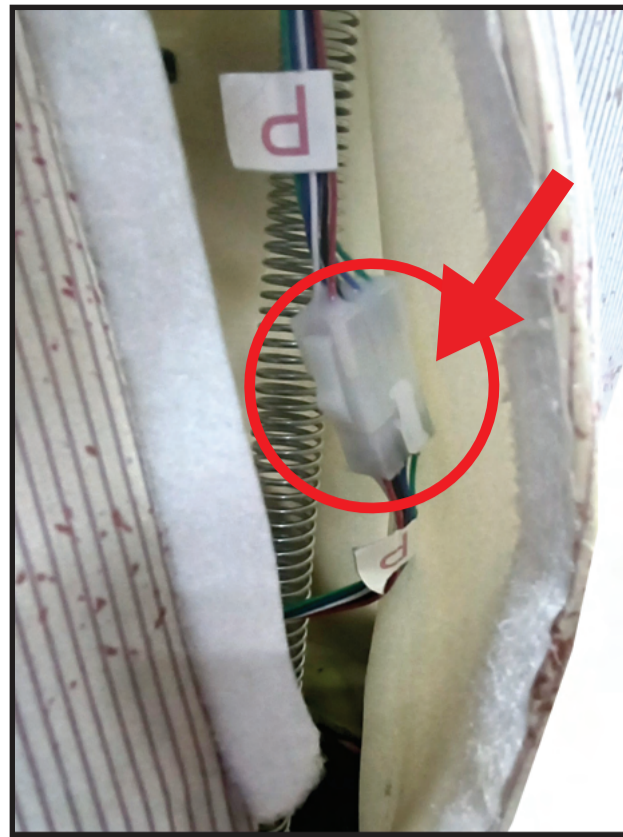
19. Slide the neck strap of the Apron over the HEAD & SHOULDER FRAMES's head. Tie the apron strings above the REAR BLISTER. Adjust the CLOTHES' neck tie over the apron.



20. Connect the CHAINSAW BLADE to the CHAINSAW. **Please note this is a one time snap lock and the CHAINSAW BLADE cannot be disassembled.**

MATCH M to M





21. From the back opening of the CLOTHES, Connect all assembly wires from the HEAD & SHOULDER FRAME to the TORSO FRAME & CONTROL BOX.

CONNECT N to N

22. From the back opening of the CLOTHES, connect all assembly wires from the HEAD & SHOULDER FRAME to the TORSO FRAME & CONTROL BOX.

CONNECT O to O

23. From the back opening of the CLOTHES, connect all assembly wires from the HEAD & SHOULDER FRAME to the TORSO FRAME & CONTROL BOX. CONNECT P to P

Secure the hook and loop fastener to complete setup.

24. Attach the tie to the apron using the hook and loop fastener. This will ensure the human sensor faces forward for optimal performance.

Add any additional weight to the base as needed during operation.



25. Insert 4 fresh alkaline batteries (recommended) or insert 6V 3A ADAPTER (Included). Turn the switch to the ON position to operate in Sound or Motion activation mode. Make a loud sound (clap), or move in front of the item to activate. Turn item OFF when not in use.

### OPTIONAL EXTERNAL SPEAKER SET UP

EXTERNAL SPEAKER IS NOT INCLUDED. MUST BE PURCHASED SEPARATELY.

1. Plug speaker cord into the jack labeled SPEAKER JACK located on side of the control box.
2. Use volume knob on external speaker to control volume levels.



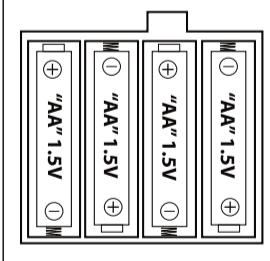
### OPTIONAL EXT. TRIGGER SET UP

EXT. TRIGGER IS NOT INCLUDED. MUST BE PURCHASED SEPARATELY.

1. Insert the cable from EXT. TRIGGER into the jack labeled EXT. TRIGGER JACK on the CONTROL BOX.
  2. Place the switch in the EXT. TRIGGER position to enable EXT. TRIGGER activation.
  3. Step on the EXT. TRIGGER to activate the scary sequence!
- \* Ext. Triggers are sold separately and can be purchased at [www.tekkyaccessories.com](http://www.tekkyaccessories.com)



### Battery Diagram



### BATTERY INSTRUCTIONS AND CAUTIONS

Battery installation and removal should be performed by an adult. Remove batteries when not in use. Use only batteries recommended in the instructions. Do not mix new and used batteries. Do not mix alkaline, carbon-zinc, nickel-cadmium, rechargeable or different types of batteries. Be mindful to insert batteries with the correct polarity (+/-) as indicated. Remove all exhausted batteries. Rechargeable batteries are only to be charged under adult supervision. Rechargeable batteries are to be removed from the item before being charged. Non-rechargeable batteries are not to be recharged. The supply terminals are not to be short-circuited. Always dispose of exhausted batteries properly. Do NOT dispose of batteries in fire, they may leak or explode.

**Warning! This item is not a toy. For decoration only. Small parts, choking hazard. This product is intended for use by persons 15 years of age and older. Not intended for use by children ages 14 years and younger.**

### WARNING

**DO NOT TURN ITEM ON UNTIL YOU HAVE COMPLETELY FINISHED ASSEMBLY. STAY CLEAR OF ITEM WHILE OPERATING. DO NOT PLACE ITEM ON UNEVEN GROUND. DO NOT PLACE WEIGHT ON ITEM WHILE IN OPERATION.**



### SMART PHONE SCAN SETUP VIDEO



LOOK WHAT YOUR BROTHER DID TO THE DOOR.



visit us at [tekkydesign.com](http://tekkydesign.com)  
Requires 6V 3A ADAPTER (included)  
or 4AA batteries (not included)

ALL NEW MATERIALS:  
METAL, FOAM, PLASTIC, POLYESTER  
Surface washable only.  
TEXAS CHAINSAW MASSACRE  
LEATHER FACE™  
is a trademark of Vortex, Inc.  
Copyright © 2023 Vortex, Inc.  
All Rights Reserved.  
MADE IN CHINA



**DO NOT RETURN THIS ITEM TO THE STORE!**  
If experiencing technical difficulties, please go to [www.tekkydesign.com](http://www.tekkydesign.com) for assistance.